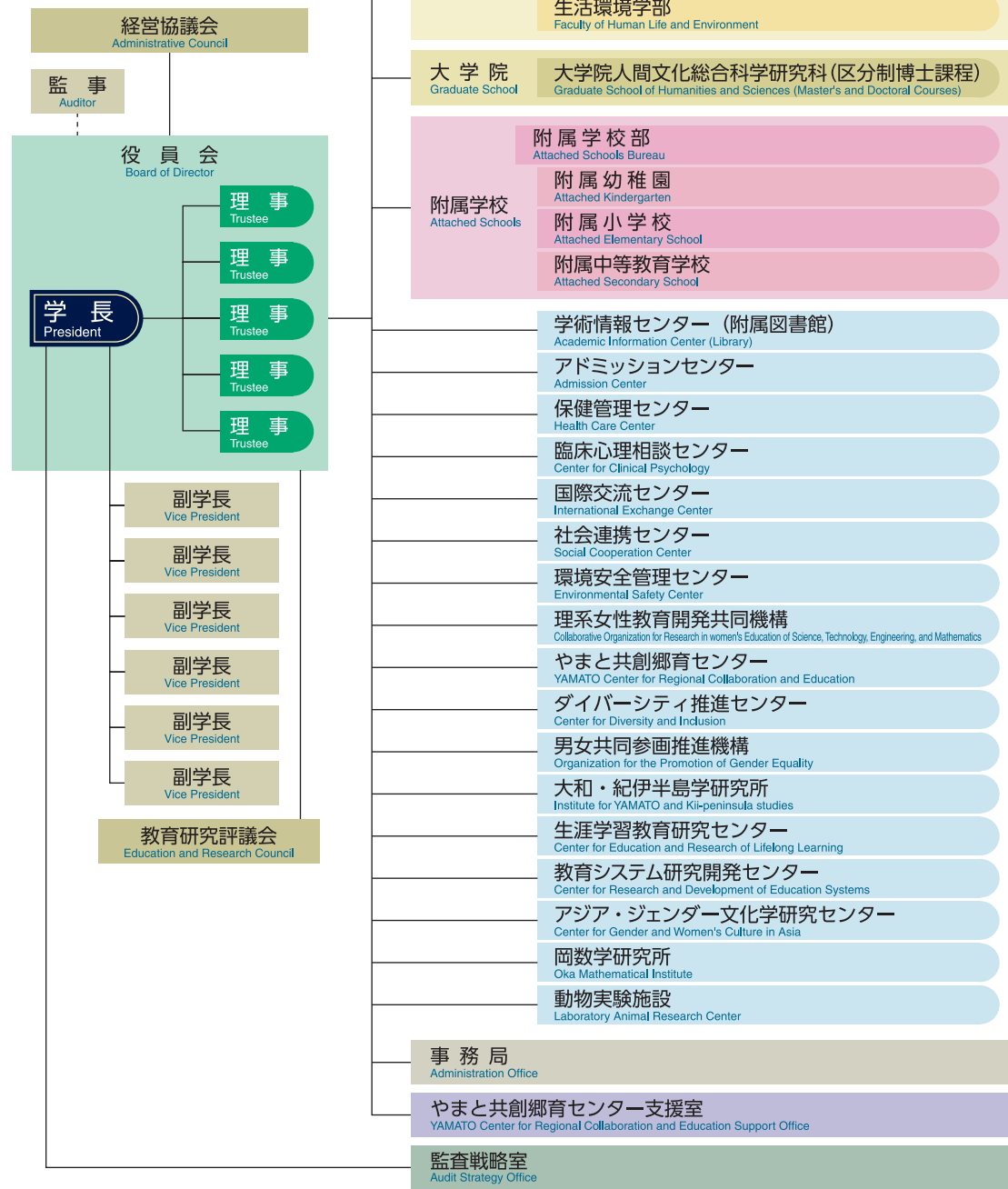
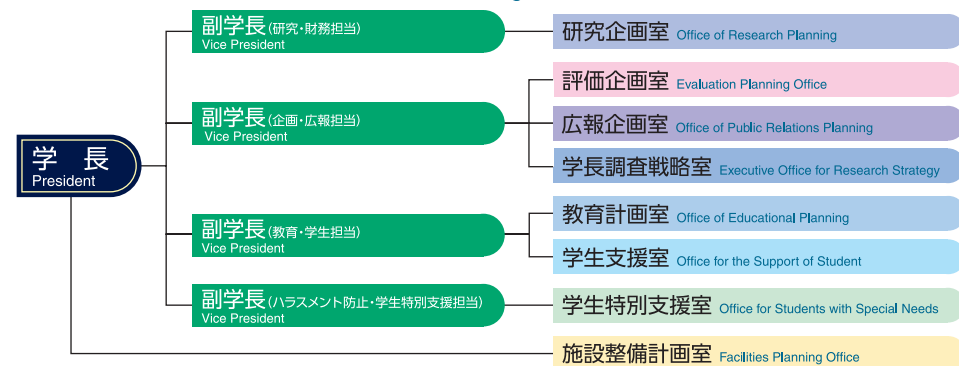


運営機構 Administrative Structure



学内運営組織 一室一 Administrative Organization -Office-

令和3年4月1日現在
As of April 1, 2021



研究院 Faculty

研究院は、平成24年4月に設置された、学長を研究院長とする全学の教員組織である。

研究院は人文科学系、自然科学系、生活環境科学系、工学系からなる。各学系に所属する教員は、各人の専門分野を生かして学部・大学院の教育研究を担当し、当該分野の教育研究の発展に寄与するとともに、学部・大学院の枠組みを超えて、多様化・高度化・学際化する人材養成の課題や研究の課題の克服に向けて、的確かつ柔軟に他の分野との連携・協力を推進する。

The Faculty is an organization of all Nara Women's University faculty members, which was established in April 2012. The president of the university serves as Dean of The Faculty.

The Faculty consists of four Divisions: The Division of Humanities and Social Sciences, The Division of Natural Sciences, and The Division of Human Life and Environmental Sciences, and The Division of Engineering. The Faculty members who belong to one of these three Divisions carry out, with their expert knowledge, the educational research programs of the undergraduate and the graduate schools, and contribute to the development of their fields of study. All The Faculty members also promote their mutual cooperation appropriately and flexibly, across administrative boundaries, in order to settle issues of human resource development and academic research that require increasingly more diverse, sophisticated, and interdisciplinary approaches.

学系 Division	領域 Research Group
人文科学系 Humanities and Social Sciences	人文社会学領域 History, Sociology and Geography 言語文化学領域 Language and Culture 人間科学領域 Human Sciences
自然科学系 Natural Sciences	数学領域 Mathematics 物理学領域 Physics 化学領域 Chemistry 生物科学領域 Biological Sciences 環境科学領域 Environmental Sciences
生活環境科学系 Human Life and Environmental Sciences	食物栄養学領域 Food Science and Nutrition 生活健康学領域 Environmental Health スポーツ健康科学領域 Sport and Health Sciences 臨床心理学領域 Clinical Psychology 衣環境学領域 Clothing Environmental Science 生活情報通信科学領域 Information and Communication Technology for Life 生活工学領域 Human Centered Engineering 住環境学領域 Residential Architecture and Environmental Science 生活文化学領域 Culture and Humanities
工学系 Engineering	工学領域 Engineering

